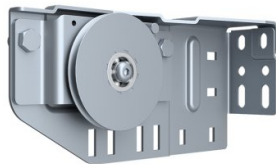


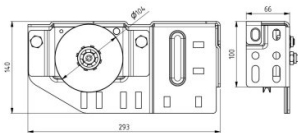
## 295108-L

LHI Pulley bracket Left



|                    |       |
|--------------------|-------|
| <b>Unit</b>        | Piece |
| <b>Box</b>         | 5     |
| <b>Pallet</b>      | 200   |
| <b>Weight (kg)</b> | 2.47  |

### Product description



- Max. 350kg (pair) certified
- LHI cable pulley suitable for 3, 4 and 5 mm cables
- Application: Low Headroom Industry (LHI)
- Material: Zinc plated steel
- Left

### Technical information

|                            |                   |
|----------------------------|-------------------|
| <b>Max. Cable diameter</b> | 5                 |
| <b>Position</b>            | Left              |
| <b>Industrial</b>          |                   |
| <b>Material</b>            | Zinc plated steel |