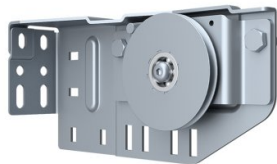


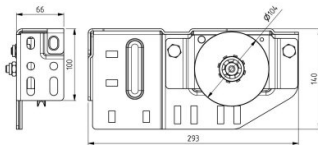
## 295108-R

LHI Pulley bracket Right



<b>Unit</b>	Piece
<b>Box</b>	5
<b>Pallet</b>	200
<b>Weight (kg)</b>	2.47

### Product description



- Max. 350kg (pair) certified
- LHI cable pulley suitable for 3, 4 and 5 mm cables
- Application: Low Headroom Industry (LHI)
- Material: Zinc plated steel
- Right

### Technical information

<b>Max. Cable diameter</b>	5
<b>Position</b>	Right
<b>Industrial</b>	
<b>Material</b>	Zinc plated steel