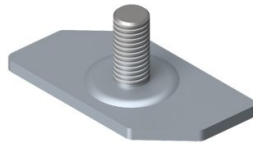


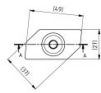
## 235412

Paro clamp plate single M8x18 for 40 & 53 mm C-profile



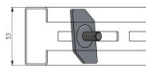
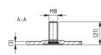
|                    |       |
|--------------------|-------|
| <b>Unit</b>        | Piece |
| <b>Box</b>         | 200   |
| <b>Pallet</b>      | 6000  |
| <b>Weight (kg)</b> | 0.04  |

### Product description



Suitable for C-profile 220021 (53mm) and 220022 (40mm)

bolted industrial systems



M8 connection

### Technical information

|                               |    |
|-------------------------------|----|
| <b>Diameter thread ("/mm)</b> | M8 |
|-------------------------------|----|