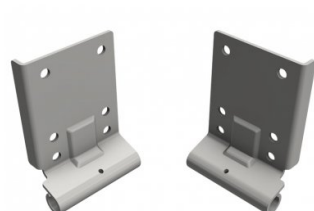


## 240033

Bottom bracket Offset=18 HOME-X/R Zinc-plated

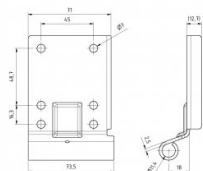


<b>Unit</b>	Pair
<b>Box</b>	25
<b>Pallet</b>	1200
<b>Weight (kg)</b>	0.41

### Product description

Bottom corner bracket with 18mm offset for our HOME-X and HOME-R system. Suitable for 11mm rollers.

Max. door weight 165 kg. Application: Residential, HOME-X & HOME-R.



### Technical information

<b>Max. load (kg)</b>	165
<b>HOME-R</b>	
<b>HOME-X</b>	
<b>Residential</b>	
<b>Cable break device</b>	-
<b>Material</b>	Galvanized steel
<b>Shaft diameter (mm)</b>	11
<b>RAL color</b>	RAL9010