

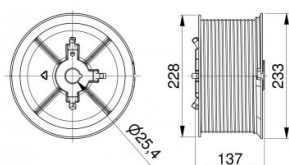
110030

Drums M203-9750 SL



Unit	Pair
Box	2
Pallet	60
Weight (kg)	7.67

Product description



Is used for a standard lift door. Supplied with 2 set screws for fixation on shaft. One cable set screw for cable fixation. For more information ask for a customer drawing. Minimum wall offset = 127mm. Max torque bolts 20Nm. Max. door height: 9642 mm at 0.5 safety windings: 8652 mm at 2.0 safety windings Max. door weight: 1000 kg. Max. cable diameter: 6 mm. Shaft diameter: 1 inch (25.4mm). Marking: Red = Left, Black = Right.

Technical information

Industrial	
System	Standard lift
Max. load (kg)	1000
Shaft diameter ("/mm)	1" (25,4)
Safety windings	0.5
Material	Die-cast Aluminium
Cable diameter (mm)	6
Max. height 0.5 safety (mm)	9642
Max. height 2.0 safety (mm)	8652
Offset (mm)	127