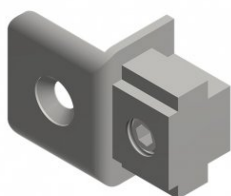


## 280200

doorcloser endstop



**Unit**

Piece

**Box**

200

**Pallet**

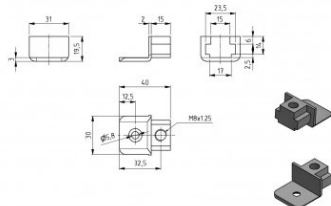
2400

**Weight (kg)**

0.05

### Product description

this end stop is suitable for securing the sliding rod of door closer 875074.



### Technical information

<b>Industrial</b>	✓
<b>Residential</b>	✓
<b>Box / component</b>	Component
<b>Position</b>	Both
<b>Material</b>	Cast steel
<b>Panel height (mm)</b>	0
<b>Color</b>	Grey