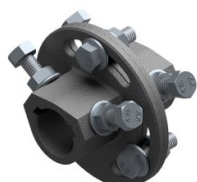


275003

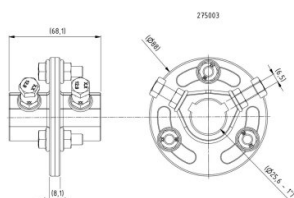
Cast iron adjustable coupler 25,4 mm



Unit	Piece
Box	20
Pallet	420
Weight (kg)	0.74

Product description

Adjustable coupling, 2 halves including keyway and set screws.
 Suitable for 25.4mm shafts with keyway.
 Max. torque difference = 150Nm.
 Material: Cast steel.



Technical information

Material	Galvanized steel
Industrial	
Residential	
Length (mm)	None
Shaft diameter ("/mm)	1" (25,4)
Keyway	Yes
Material	Cast steel
Adjustable	