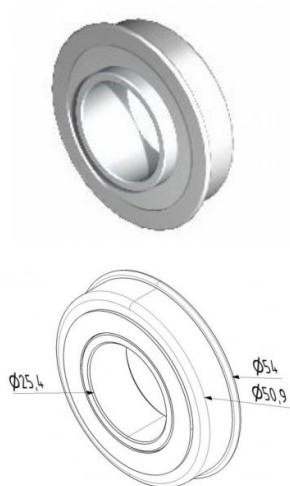


## 13026.1

Bearing 25,4 mm



|                    |       |
|--------------------|-------|
| <b>Unit</b>        | Piece |
| <b>Box</b>         | 180   |
| <b>Pallet</b>      | 7200  |
| <b>Weight (kg)</b> | 0.1   |

### Product description

Suitable for mounting in bearing bracket or stationary plugs.  
Maximum load: 180 kg.

### Technical information

|                              |           |
|------------------------------|-----------|
| <b>Material</b>              | -         |
| <b>Has retainer</b>          | -         |
| <b>Shaft diameter ("/mm)</b> | 1" (25,4) |