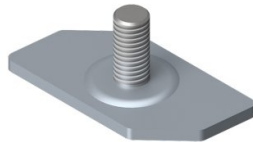


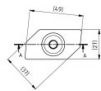
235412

Paro platte einzel M8x18 für 40 & 53 mm C-profile



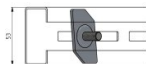
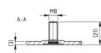
Einheit	Stück
Karton	200
Palette	6000
Gewicht (kg)	0,04

Produktbeschreibung



Geeignet für C-Profil 220021 (53mm) und 220022 (40mm)

geschraubte industrielle Systeme



M8-Anschluss

Technische Information

Gewinde (mm - inch)	M8
-----------------------------	----